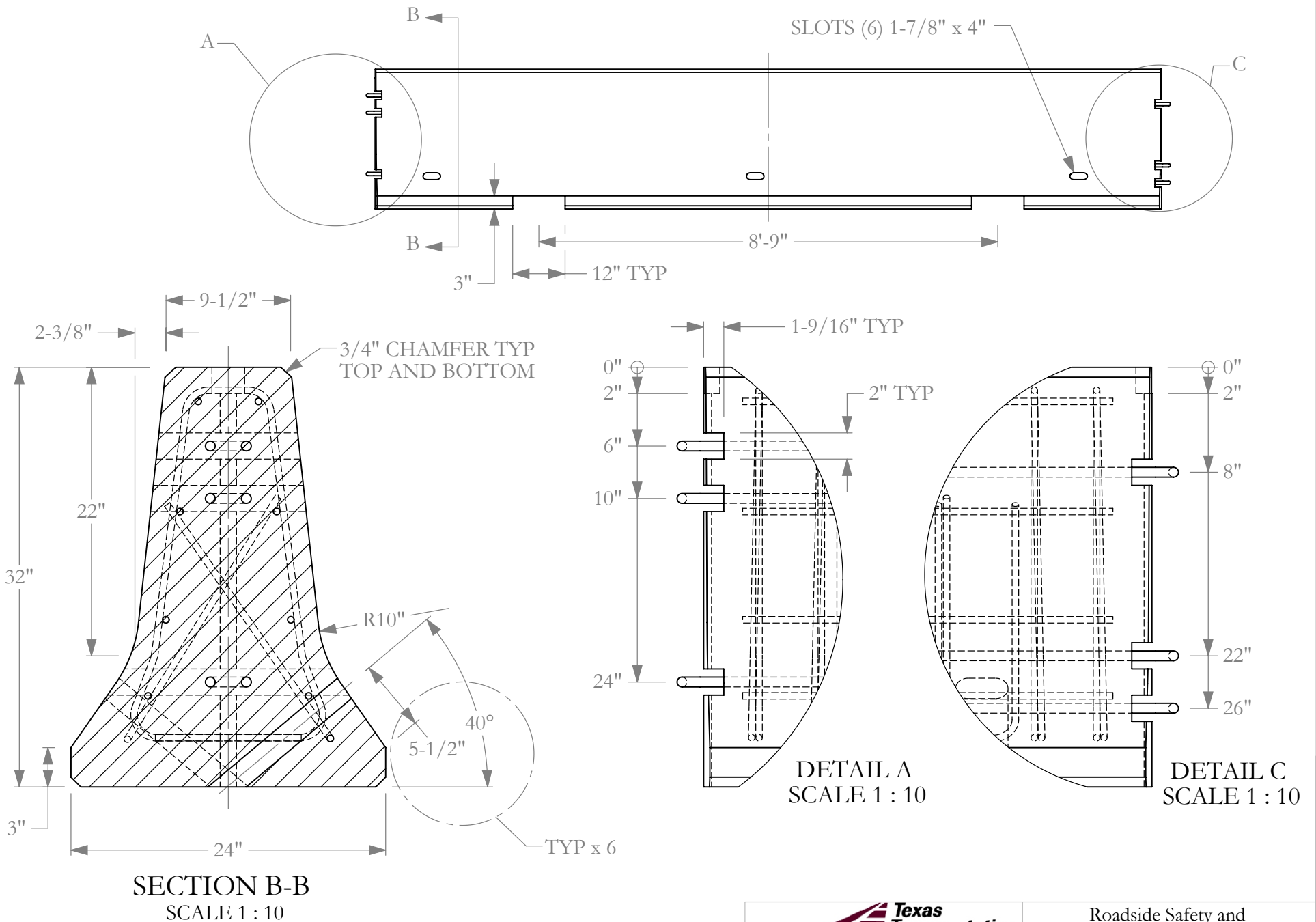


Roadside Safety and  
Physical Security Division -  
Proving Ground

Project 405160-37 15' Barriers 2012-06-14

Drawn By GES Scale 1:20 Sheet 1 of 4 Plan View



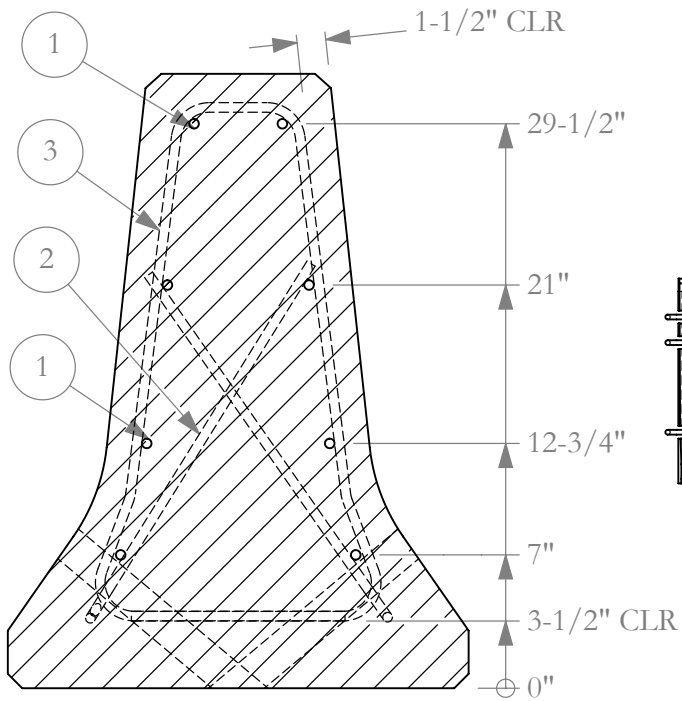
- 2a. Concrete is 5000 psi.
- 2b. Abbreviations used: TYP - typical, CLR - clearance.



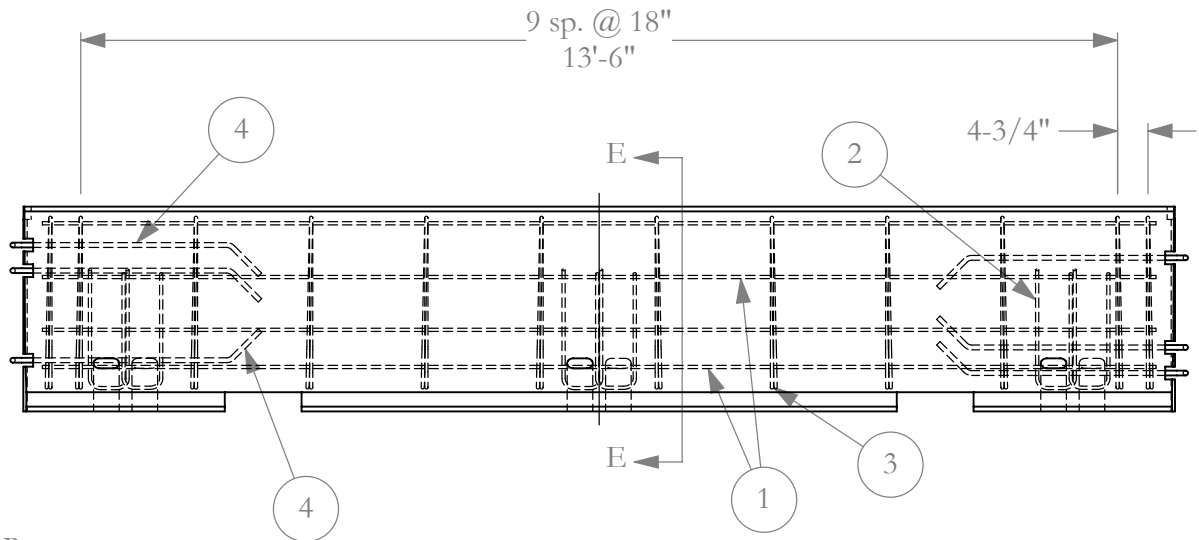
Roadside Safety and Physical Security Division - Proving Ground

Project 405160-37	15' Barriers	2012-06-14
Drawn By GES	Scale 1:30	Sheet 2 of 4 Elevation View

#	PART NAME	MATERIAL	QTY.
1	Rebar, #4 x 14'6"	grade 60 rebar	8
2	403 Bar	grade 60 rebar	6
3	Stirrup	grade 60 rebar	12
4	End Loops	Ø3/4" A36 rod	6

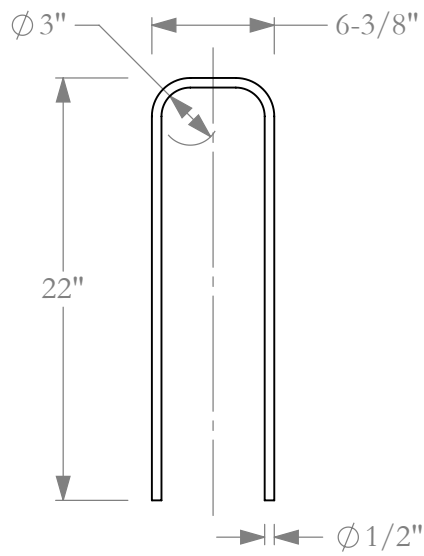


SECTION E-E  
SCALE 1 : 10  
18" DEEP

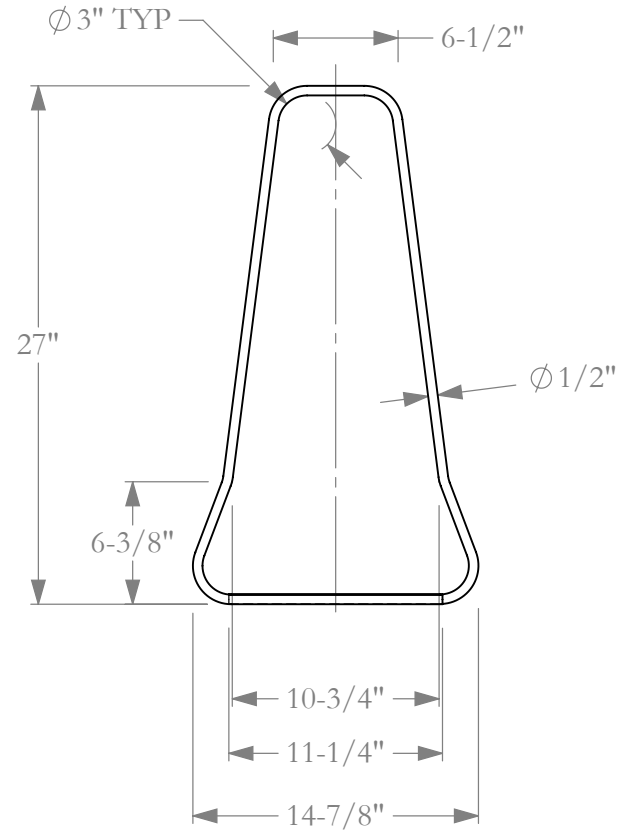


Roadside Safety and  
Physical Security Division -  
Proving Ground

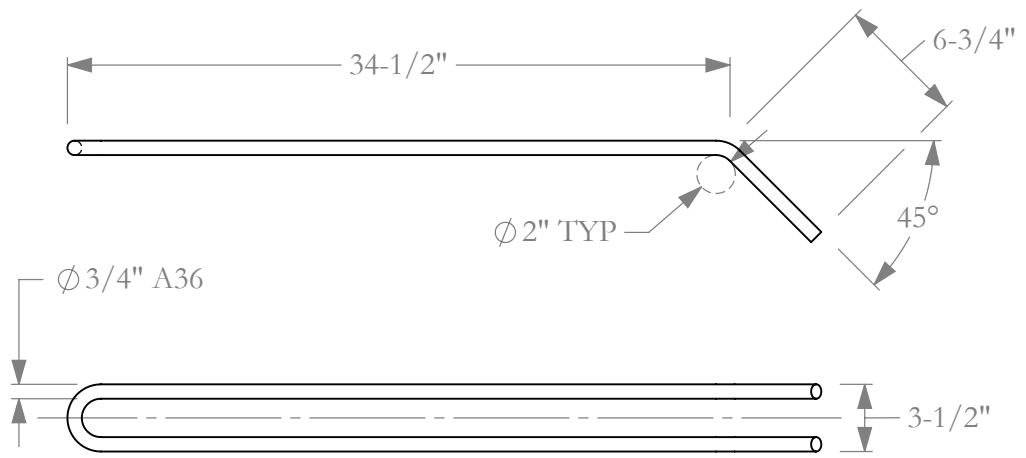
Project 405160-37	15' Barriers	2012-06-14
Drawn By GES	Scale 1:1	Sheet 3 of 4 Rebar Placement



2 403 BAR



3 STIRRUP



4 END LOOP



Roadside Safety and  
Physical Security Division -  
Proving Ground

Project 405160-37	15' Barriers	2012-06-14
Drawn By GES	Scale 1:10	Sheet 4 of 4 Rebar and Loop Details