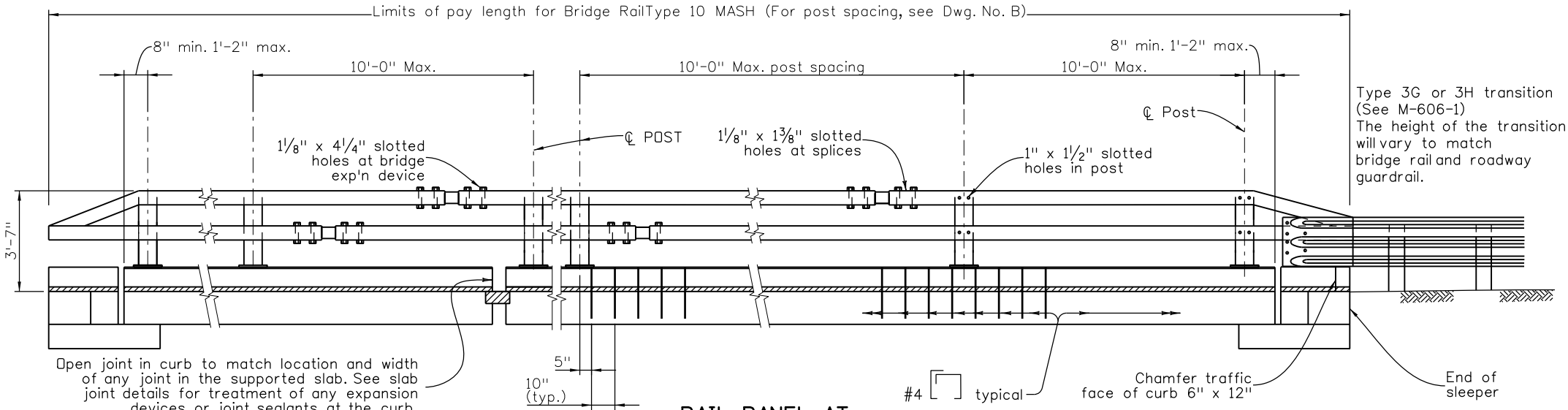


chavezn 12:55:10 PM X:\0230\Mike M-Glenwood Canyon Br. Rail Type 8 Details\ChavezN Working Bridge Rail\Sheet_B-606-10MASH.dgn



**RAIL PANEL AT
TERMINAL SECTION**

(See Roadway plans for ends not attached to Guard Rail.)

**RAIL PANEL AT
EXPANSION DEVICE**
ELEVATION - BRIDGE RAIL

(See roadway plans for ends requiring attachment to guard rail.)

**RAIL PANEL AT
TRANSITION SECTION**

NOTES:

All tubes shall be ASTM A-500 Grade C or ASTM A-1085.
All posts, base plates, and splice tubes fabricated by
welding shall be ASTM A-572 Grade 50.
All other steel shall be ASTM A-36 unless otherwise noted.

The above material and all anchor bolts and miscellaneous
bolts, nuts, and washers shall be galvanized after fabrication
in accordance with Section 509. Concrete, reinforcing steel,
and structural steel elements shall conform to the requirements
of sections 601, 602, and 509, respectively.

Post anchor, encased in concrete, shall be ASTM A-36
(AASHTO M-183) steel and need not be galvanized.

The tubes shall be shop bent or fabricated to fit horizontal
curve when radius is less than 1,800 feet.

Tubes shall be continuous over not less than two posts,
preferably 4 posts. No welded butt splices will be allowed in
the tube sections.

The centerline of the tube splice shall be 1'-8" minimum and
2'-6" maximum from the centerline of the posts.

All bolts that have lock washers shall be tightened to snug only.

Posts shall be perpendicular to the longitudinal roadway grade.

One or more 10'-0" post spaces may be reduced (6'-8" min.)
in order to maintain dimensions from the end of the rail and
expansion joints.

The top and inside face of the curb shall receive a coating of
Item 515, Concrete Sealer, either a silane/siloxane, or a type
consistent with the sealer used on the deck concrete.

Payment will be made under item 606, Bridge Rail type 10 MASH,
for all posts, post anchors, base plates, backing plates, anchor
bolts, miscellaneous bolts, nuts, washers, tubes, tube expansion
devices, tube splices, end plates, curb concrete (Class D), curb
reinforcing steel, curb concrete sealer, and reflector tabs.

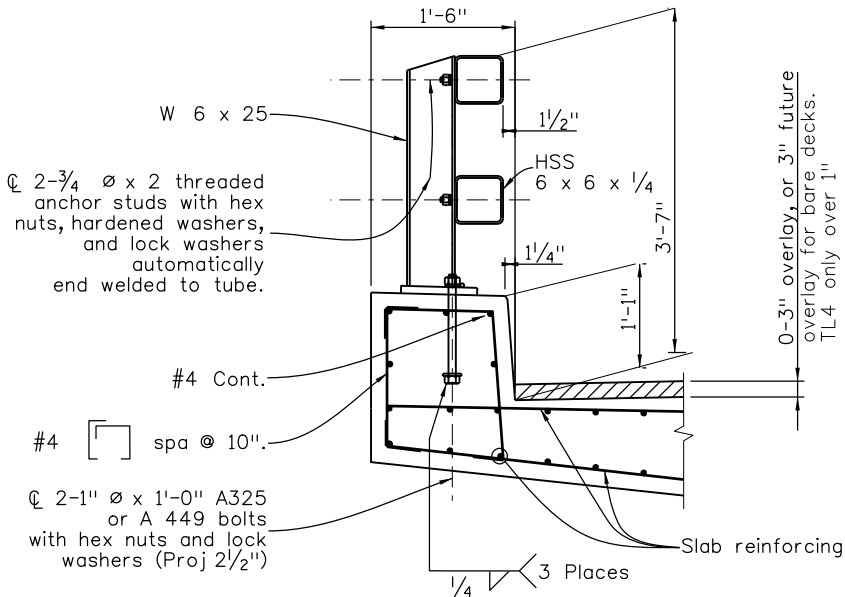
Prior to fabrication of this item, three sets of working drawings
which comply with the requirements of section 105, shall be
submitted to the Engineer for information only.

Structural Steel:
AASHTO M270 Gr 36 (ASTM A709 Gr 36) $f_y = 50$ ksi
AASHTO M270 Gr 50 (ASTM A992 Gr 50) $f_y = 50$ ksi
COLD FORMED ASTM A500 GRADE C or ASTM A1085 $f_y = 50$ ksi
Design: AASHTO MASH 2016 TL-5 for overlay thickness up to 1"
AASHTO MASH 2016 TL-4 for overlay thickness over 1"
and resulting in a height of the top of rail over pavement

of 36"
Curb Concrete: Class D, $f'_c = 4.5$ ksi
Curb Reinforcing Steel: ASTM A995 (2205 or 316LN), $f_y = 75$ ksi min.
ASTM A1035 (Grade 100), $f_y = 100$ ksi min.
For additional details see next rail sheets.

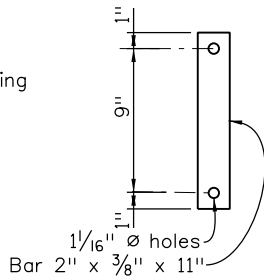
INFORMATION ONLY

DESCRIPTION	UNIT	PER LIN. FT.
Structural Steel (Galvanized)	LB.	48.9
Concrete Class D (Bridge)	CU.YD.	0.059
Reinforcing Steel (Epoxy Coated)	LB.	7.4

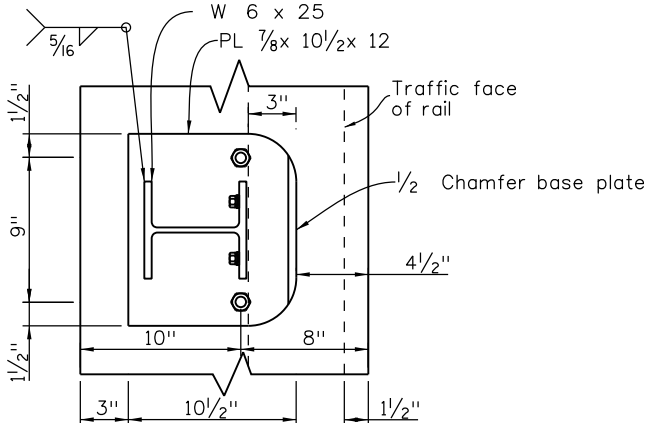


SECTION

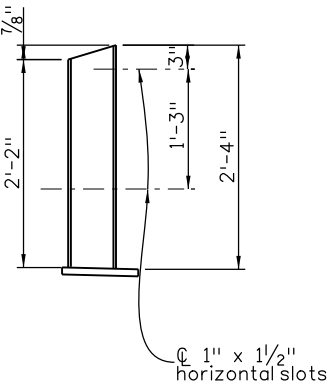
Used when placed on concrete slab.



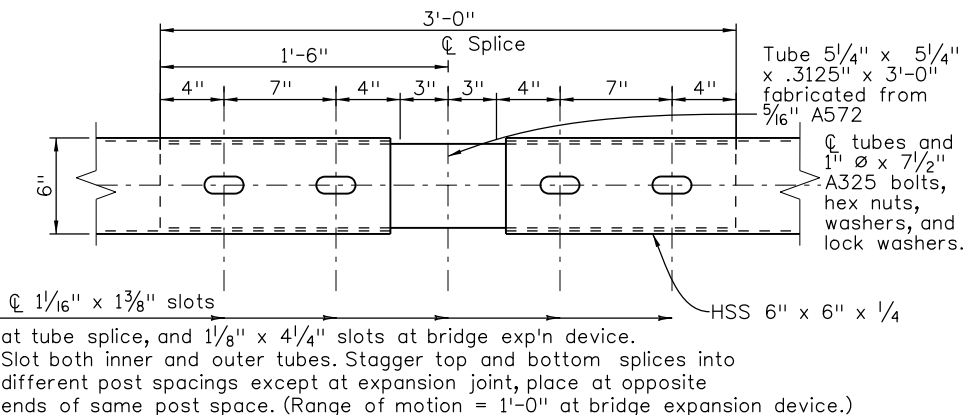
ANCHOR DETAIL



PLAN - POST DETAIL



ELEVATION



PLAN - TUBE SPLICE

Print Date: 12/11/2017
File Name: Sheet_B-606-10MASH.dgn
Horiz. Scale: NTS Vert. Scale: As Noted
Staff Bridge Branch - Unit 022X Unit Leader Initials

0000

Sheet Revisions		
Date:	Comments	Init.

Colorado Department of Transportation
4201 East Arkansas Avenue
Room 107
Denver, CO 80222
Phone: 303-757-9309 FAX: 303-757-9197
Staff Bridge Branch Initials

As Constructed

No Revisions:
Revised:
Void:

BRIDGE RAIL TYPE 10 MASH

Designer: XXXXXXXX Structure X-XX-XX
Detailer: XXXXXXXX Numbers X-XX-XX
Sheet Subset: BRIDGE Subset Sheets: BXX of XXX

Project No./Code

Project Number
Code
Sheet Number