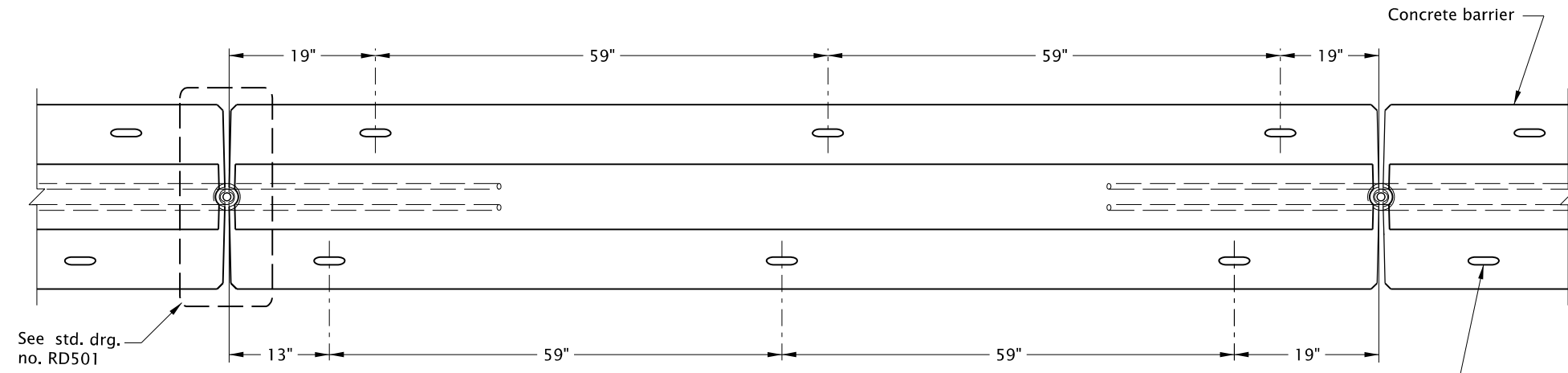


rd502.dgn 15-JAN-2021

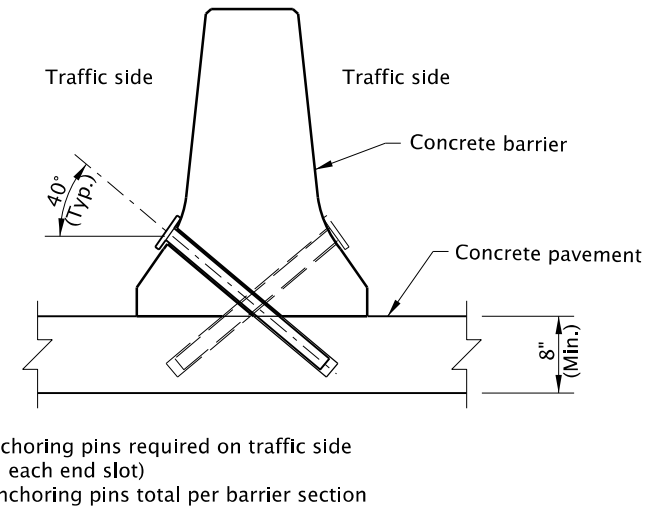
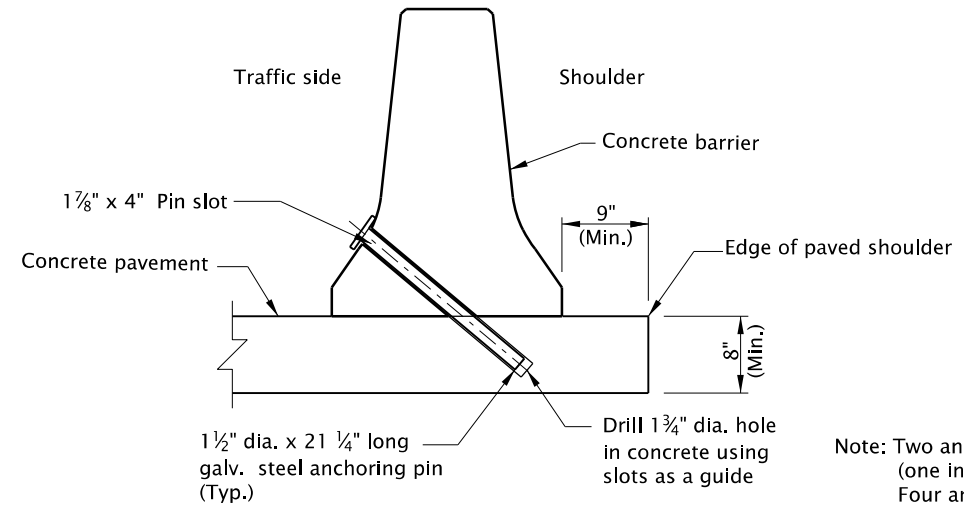
RD502



CONCRETE BARRIER ANCHORING PIN LOCATIONS

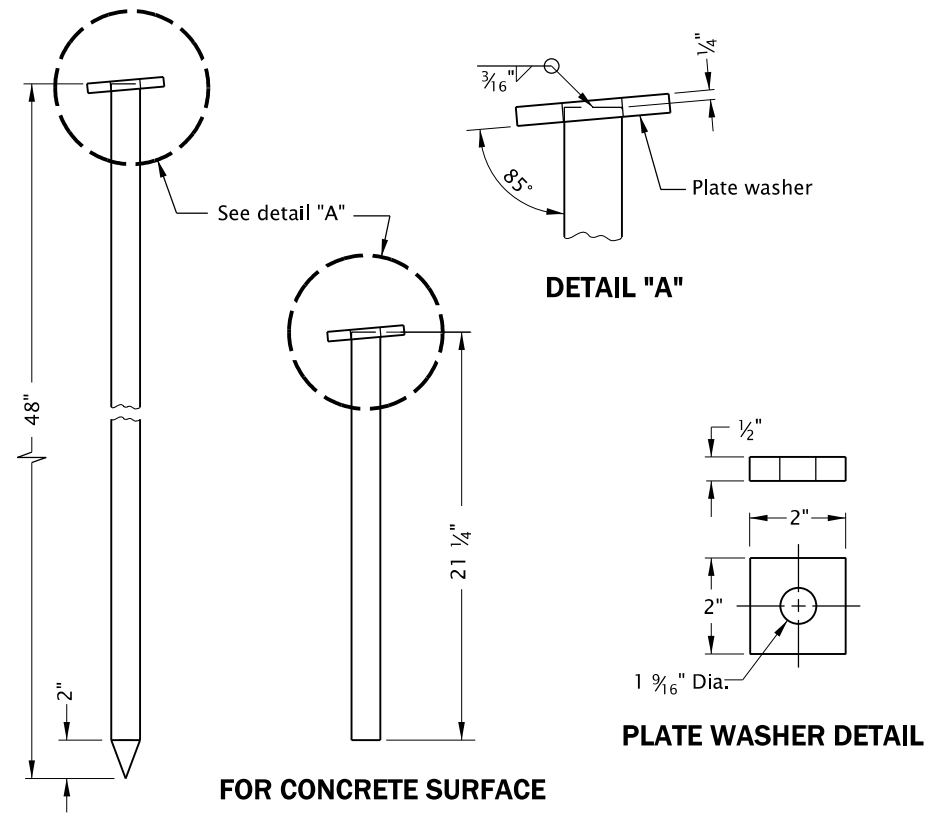
1 7/8" x 4" Slot (typ.) - only required on traffic side(s) of barrier

- GENERAL NOTES FOR ALL DETAILS ON THIS SHEET:**
1. See Std. Dwgs. RD500 and RD501 for details not shown.
 2. Conc. grout for grouting over pins, pinning holes or grouting of scuppers shall be portland cement grout, weak in strength and of thick consistency, as directed.
 3. Precast concrete barrier used in medians less than 8' in width shall be secured to roadway. See Std. Dwgs. RD515 & RD516 for details.
 4. All pins, bolts, dowels, loop bars, and connectors shall be hot-dip galvanized after fabrication.



Note: Two anchoring pins required on traffic side (one in each end slot)
Four anchoring pins total per barrier section

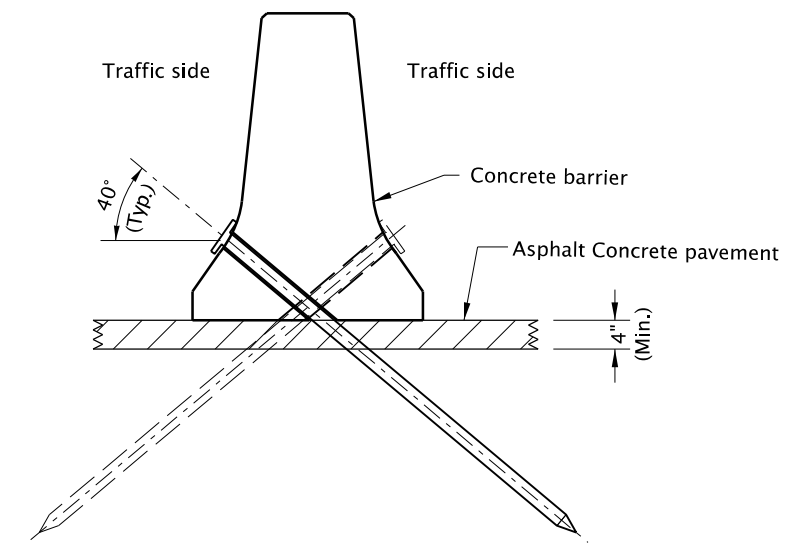
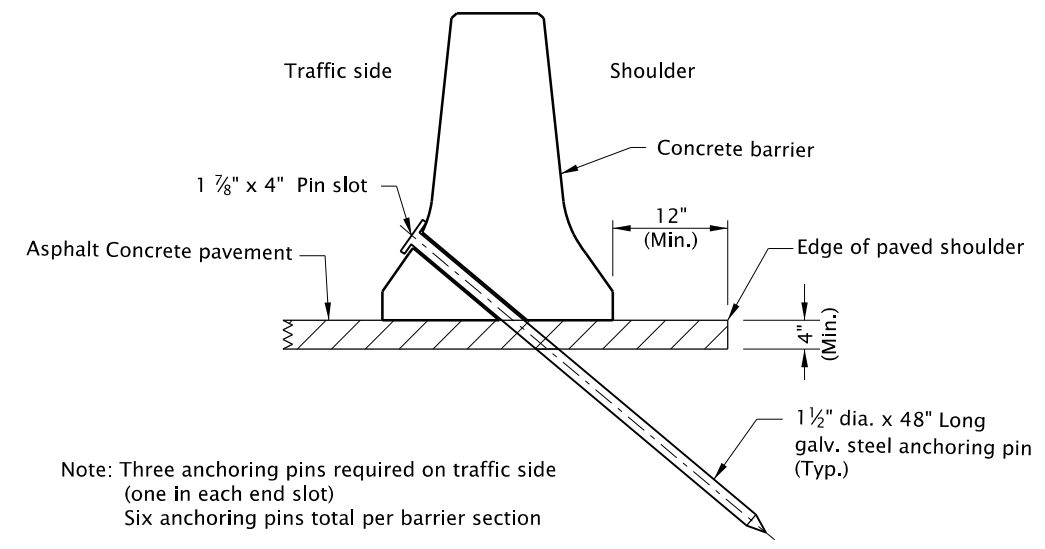
CONCRETE ANCHORING PIN DETAILS



FOR CONCRETE SURFACE

FOR ASPHALT SURFACE

ANCHORING PIN ASSEMBLY DETAIL



Note: Three anchoring pins required on traffic side (one in each end slot)
Six anchoring pins total per barrier section

ASPHALT ANCHORING PIN DETAILS

METHODS OF SECURING CONCRETE BARRIER TO ROADWAY

| | | | |
|---|---------------------|-----------------------------|--|
| CALC. BOOK NO. <u>N/A</u> | | SDR DATE <u>15-JAN-2021</u> | |
| NOTE: All material and workmanship shall be in accordance with the current Oregon Standard Specifications | | | |
| OREGON STANDARD DRAWINGS | | | |
| 32" CONCRETE BARRIER TYPE "F" PRECAST | | | |
| 2021 | | | |
| DATE | REVISION | DESCRIPTION | |
| 10-2020 | NEW DRAWING CREATED | | |
| | | | |
| | | | |

The selection and use of this Standard Drawing, while designed in accordance with generally accepted engineering principles and practices, is the sole responsibility of the user and should not be used without consulting a Registered Professional Engineer.